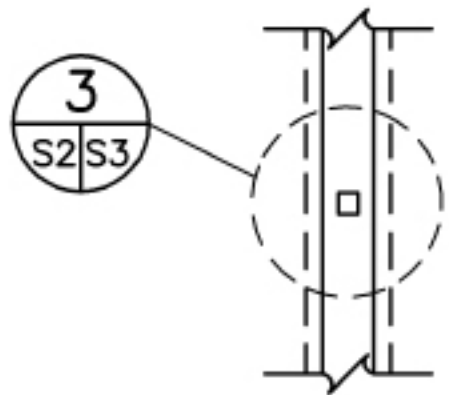
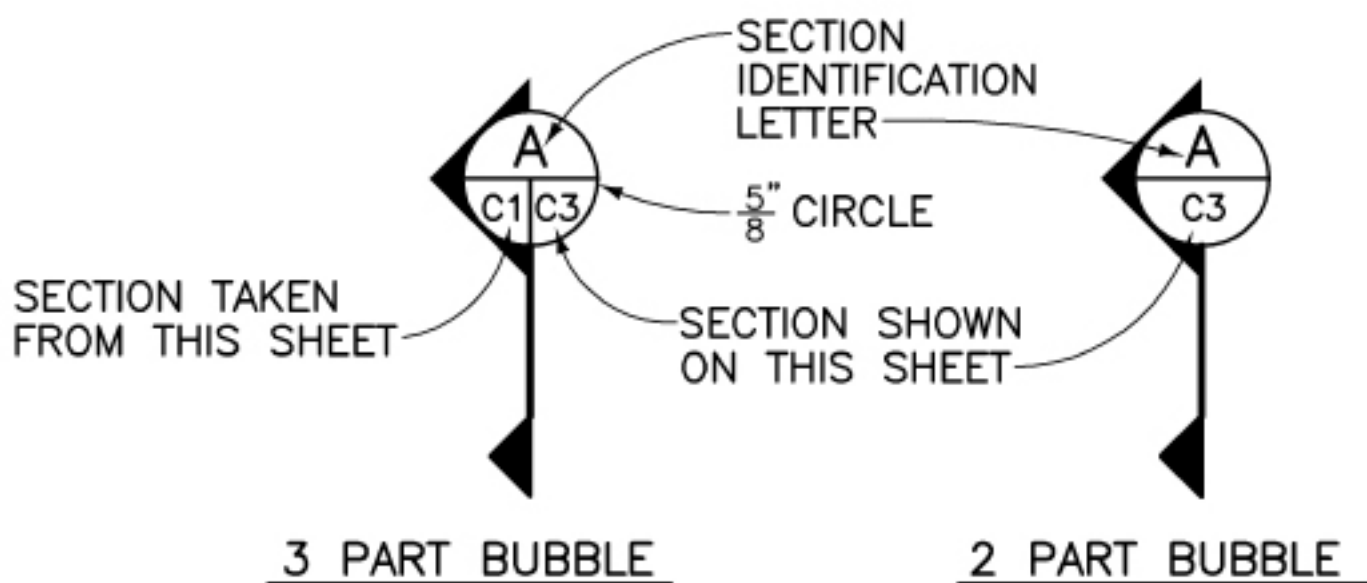


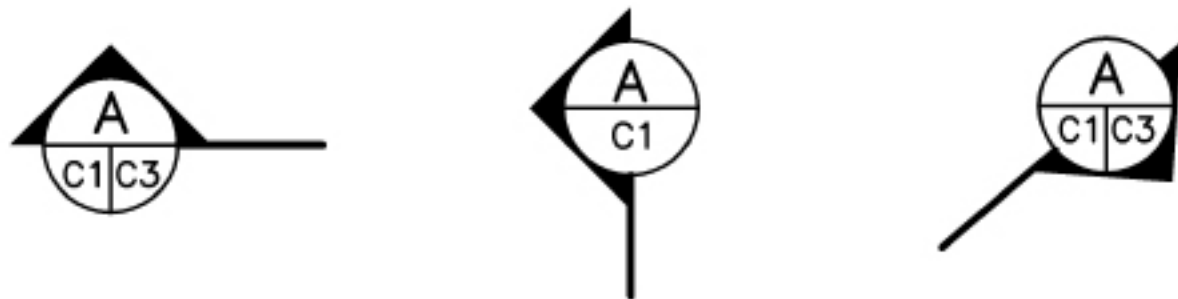
2 PART BUBBLE

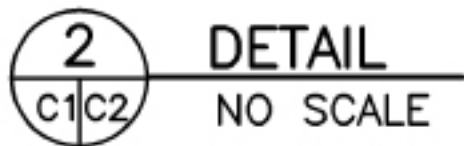


3 PART BUBBLE

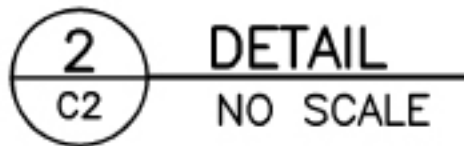


IDENTIFICATION LETTER AND SHEET NUMBERS SHOULD ALWAYS BE DRAFTED HORIZONTALLY, AS SHOWN BELOW:





3 PART BUBBLE



2 PART BUBBLE

WHEN A SECTION OR DETAIL IS TAKEN FROM MORE THAN ONE SHEET AND A 3-PART BUBBLE IS USED:

